

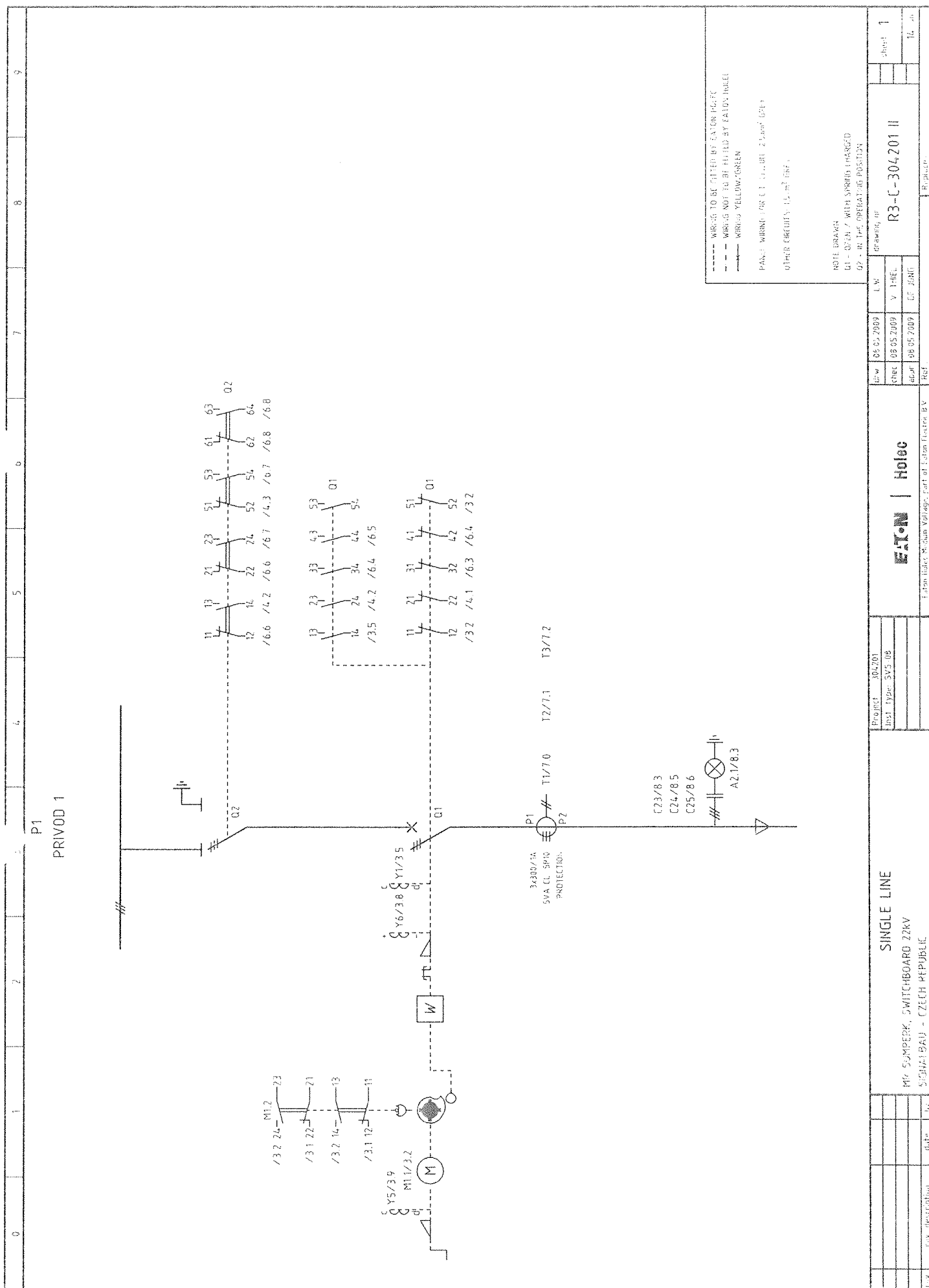
DOKUMENTACE SKUTEČNÉHO PROVEDENÍ

Č.změny	Text změny - odůvodnění	Datum	Podpis

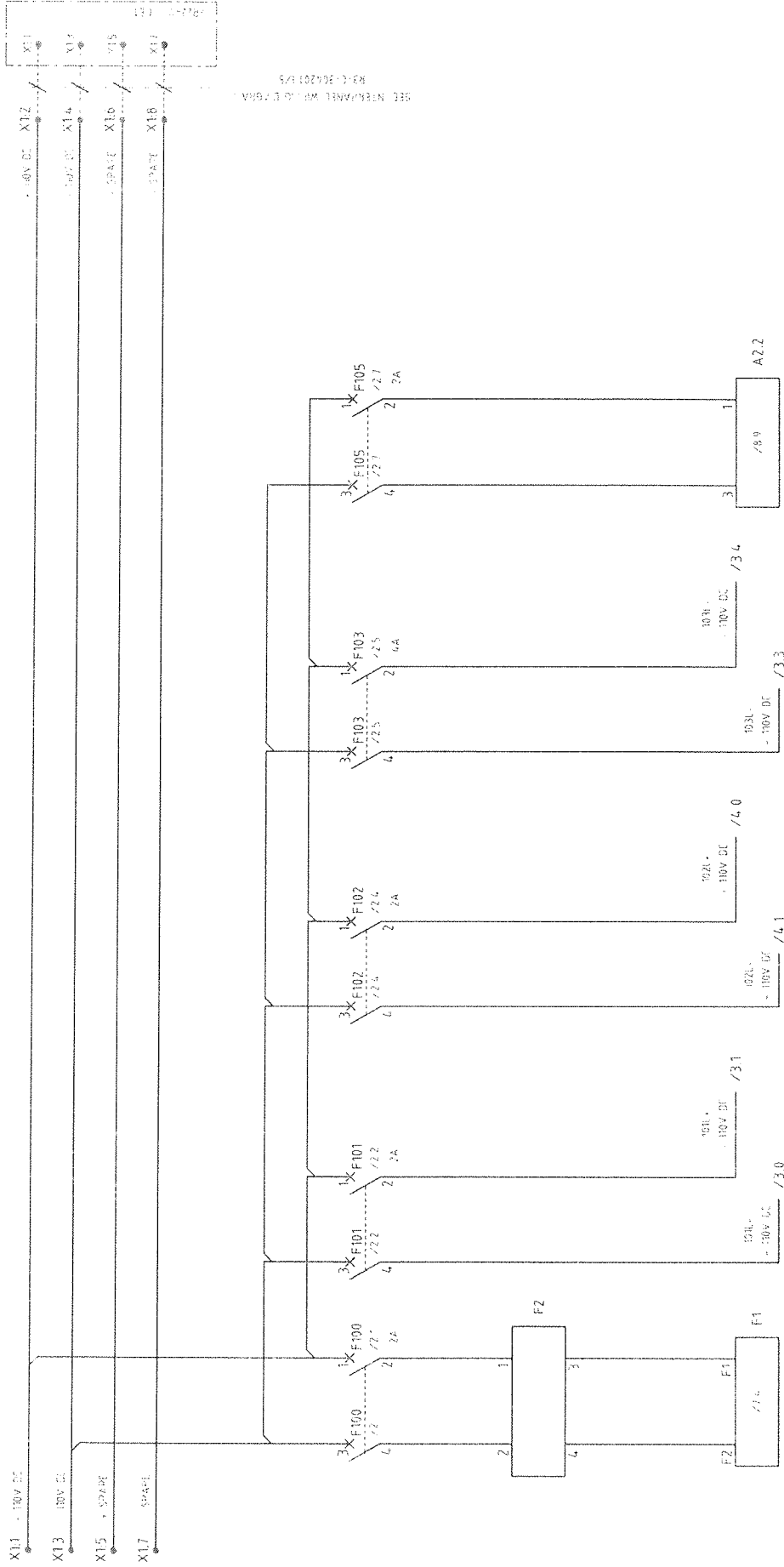


Olšanská 1a
130 80 Praha 3
Česká republika
tel.: 224 22 71 68
fax: 224 23 03 16
faxmodem: 2670 943 64
E-mail: praha@sudop.cz

OBJEDNATEL	Správa železniční dopravní cesty, s.o. a České dráhy a.s. v zastoupení: SŽDC s.o., Stavení správa Olomouc, Nerudova 1, 772 58 Olomouc		
STŘEDISKO	208 ELEKTROTECHNIKY, TRAKCE, SDĚLOVACÍ A ZABEZPEČOVACÍ TECHNIKY	VEDOUCÍ STŘEDISKA ING. MARTIN RAIBR	GENERÁLNÍ ŘEDITEL ING. JOSEF FIDLER
ODPOVĚDNÝ PROJEKTANT STAVBY	ODPOVĚDNÝ PROJ. OBJ., PS	NAVRHL, VYPRACOVAL	KONTROLOVAL
ING.MONIKA CHRENKOVÁ MCO a.s.	ING. PETR VEČEŘ <i>Petr Večeř</i>	ING. PETR VEČEŘ <i>Petr Večeř</i>	ING. KAREL KREMLÁČEK <i>Karel Kremláček</i>
KRAJ	OLOMOUCKÝ	MÚ/OÚ/POVĚŘENÁ OBEC	ŠUMPERK
Elektrizace trati Zábřeh - Šumperk PS 04-09-01 Žst. Šumperk, TM Šumperk, technologie - rozvaděč 22 kV		ÚČEL	DSP
		DATUM	04/2010
		MĚŘÍTKO	—
Obvodové schéma - rozvaděč 22 kV - přívod P1		FORMÁTY	A4
		ČÁST D.3.3	PŘÍL. 7



0	1	2	3	4	5	6	7	8	9	
CONTROL MODULE AND PROTECTION OF TBS			AUXILIARY SUPPLY			OPERATIONAL			VOLTAGE INDICATOR	
						CIRCUIT INPUTS			VOLTAGE SENSOR 22kV	



SEE REFERENCE WITH L750A
R3-C-304201/5

F100
NO NC
/2.1
/2.2

F101
NO NC
/2.1
/2.2

F102
NO NC
/2.1
/2.2

F103
NO NC
/2.1
/2.2

F105
NO NC
/2.1
/2.2

CIRCUIT DIAGRAM			MP SUPERK, SWITCHBOARD 22kV			CZECIN REPUBLIC		
Project: 304201			List Type: SVS-08			R3-C-304201 II		
Date: 06.05.2009			Date: 06.05.2009			Date: 06.05.2009		
Author: 06.05.2009			Author: 06.05.2009			Author: 06.05.2009		
Check: 06.05.2009			Check: 06.05.2009			Check: 06.05.2009		
Drawn: 06.05.2009			Drawn: 06.05.2009			Drawn: 06.05.2009		
Sheet: 2			Sheet: 2			Sheet: 2		

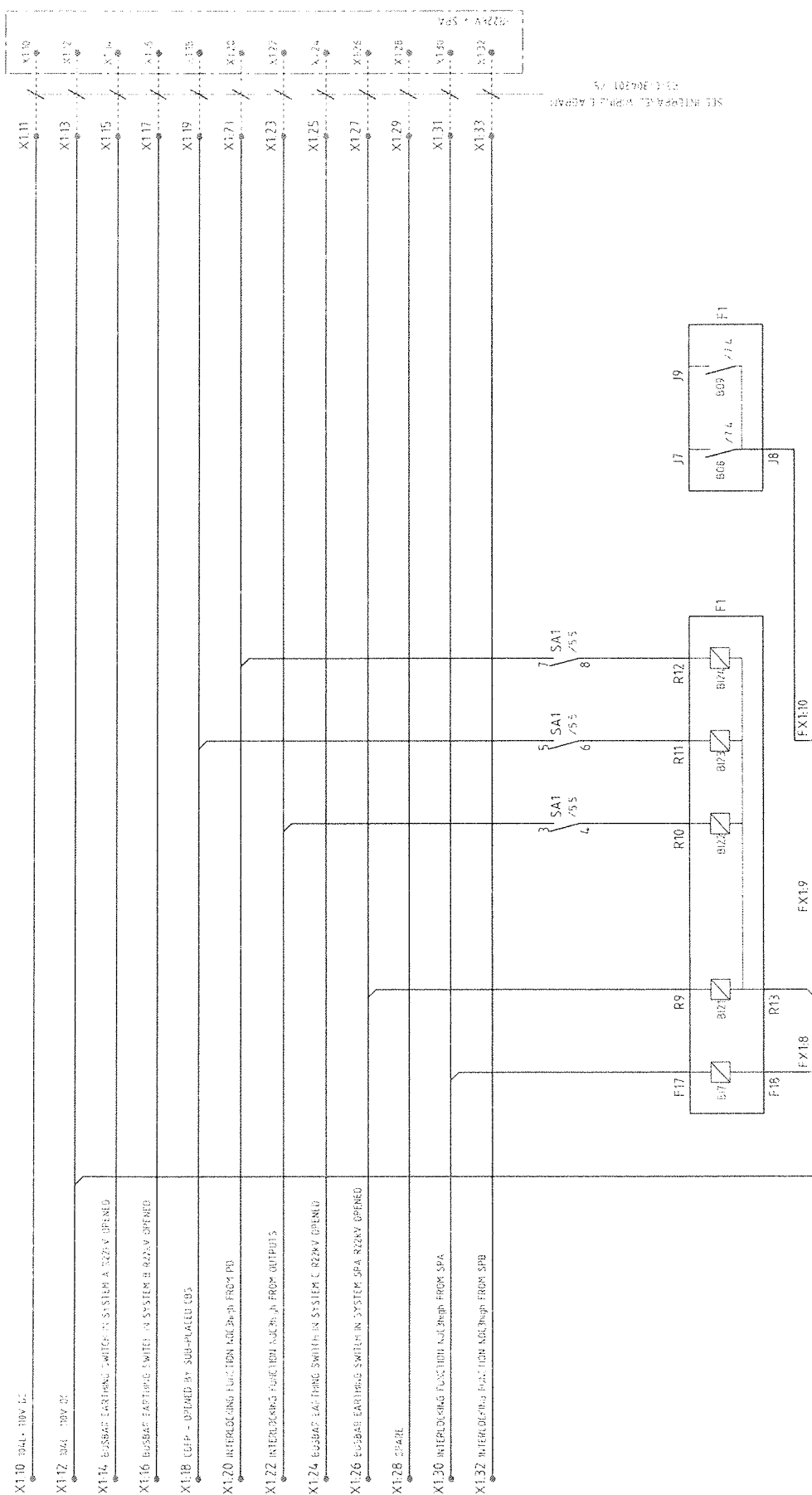
NO	DATE	BY	CHKD	REVISION
1	10.06.2009
2	19.06.2009
3	19.06.2009

Project: 304201
Rev. 1: 19.06.2009
Rev. 2: 19.06.2009
Rev. 3: 19.06.2009

Signature: ...
Date: ...

[illegible]

COMMON CIRCLES - INTERCONNECTIONS



SA1
NO
48/5.6
5.5
5.5

CIRCUIT DIAGRAM

MR SUMPERK, SWITCHBOARD 22kV
SIGNALBAU - CZECH REPUBLIC.

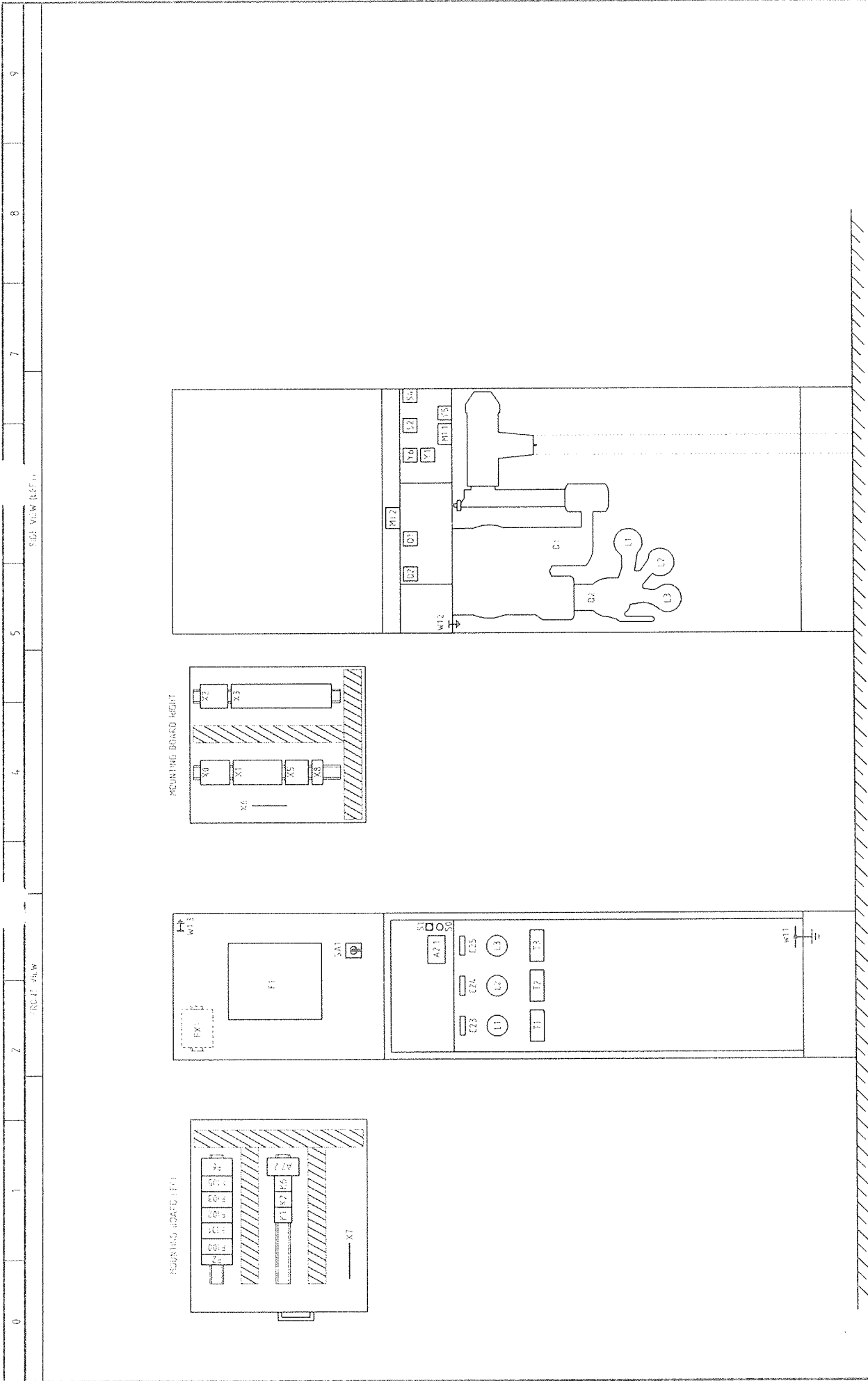
LETTER

11
R3-C-304201 III

5

100

[illegible]



SPACE ALLOCATION										Project: 304201		Drawing nr		Sheet: 9	
										test type: SVS-08		LW			
												V INEL			
												EUT-N		R3-C-304201 II	
												Holec			
												Date: 17.07.2029			
												Ref			
MR SUMPEPK, SWITCHBOARD ZKKV										Labo-Rate-Medium-Voltage-Port of Eaton-Hercules-BV					
SIGNALBAU - CZECH REPUBLIC															

0		1	2	4	5	7	8	9	
CODE		DESCRIPTION		MAKE		TYPE	ART NR	CIRCUIT NR	UNIT WIRING DIAGRAM
A2.1	A2.2	LED VOLTAGE INDICATOR VOLTAGE INDICATOR INTERFACE WITH OPTICAL INPUTS		EATON HOLEC EATON HOLEC		VDS JB5005 OPT INT JB OPT	E569986 E569991	/13 /89	R3-C-304201 I/7
C23	C24	CAPACITOR CAPACITOR		EATON HOLEC EATON HOLEC				/13 /13	
C25		CAPACITOR		EATON HOLEC				/13	
F1	F2	PROTECTION RELAY OVERVOLTAGE RELAY		SIEMENS DEHN / BLITZDUCTOR		75J6321-5EB92-3FG0-LOR BCT MOD BE 110		/74 /21	
F6		NO-VOLTAGE RELEASE COIL MEASURINGSET		EATON HOLEC		110V DC		/35	
F100	F101	MINIATURE CIRCUIT-BREAKER MINIATURE CIRCUIT-BREAKER		MOELLER MOELLER		FAZ-C2/2-DC, 2A	E6035801	/21	
F102	F103	MINIATURE CIRCUIT-BREAKER MINIATURE CIRCUIT-BREAKER		MOELLER MOELLER		FAZ-C2/2-DC, 2A	E6035801	/22 /24	
F105		MINIATURE CIRCUIT-BREAKER		MOELLER		FAZ-C4/2-DC, 4A	E6035803	/25	
				MOELLER		FAZ-C2/2-DC, 2A	E6035801	/27	
K1	K2	AUXILIARY RELAY AUXILIARY RELAY		SIEMENS SIEMENS		3RH11 22-1BF40, 110V DC	E569651	/36	
K6		AUXILIARY RELAY		SIEMENS		3RH11 22-1BF40, 110V DC	E569651	/31 /38	
M11	M12	SPRING-CHARGING AND CLOSING MOTOR AUXILIARY CONTACTS SPRING CHARGING MOTOR		GEFEG SCHALTBAU		NH8060-20/85-RL, 12A, 110V DC S 800 E/20	E670367 E313196	/11 /11	
O1		CIRCUIT-BREAKER AUXILIARY CONTACTS CIRCUIT-BREAKER		EATON HOLEC SANTON		NVS20AA-2406 SBC-1106/54FG	E616364	/14	
Q2		CHANGEOVER SWITCH AUXILIARY CONTACTS CHANGEOVER SWITCH		EATON HOLEC SCHALTBAU		S 800 E/20	E313196	/15	
S0	S1	PUSH-BUTTON "OFF" (WHITE) PUSH-BUTTON "ON" (GREEN) - PADLOCKABLE		MOELLER MOELLER		M22S-D-X 8M22-XD-W-X0 M22S-D-G-X1/M22-AK11		/93 /36	
S2		AUXILIARY CONTACT CONTROLLED BY THE EARTHING LOCK. 11-12 OPENED ONLY WHEN THE CIRCUIT-BREAKER IS USED FOR EARTHING AND IS LOCKED BY KEY		SCHALTBAU		S 800 E/20	E313196	/35	
A		CODE DESCRIPTION		Project 304201 Inst. Type: SY5-08		EATON Holec		Drawing No. R3-C-304201 II	
B		MP SUMPERK, SWITCHBOARD 22kV		L.W. 08.05.2009 L.W. 08.05.2009		V. THIEL V. THIEL		sheet 10	
C		SIGNALBAU - CZECH REPUBLIC		02.01.2009 02.01.2009		DE JONG DE JONG		A	
D				02.01.2009 02.01.2009				B	
E								C	
F								D	
G								E	
H								F	
I								G	
J								H	
K								I	
L								J	
M								K	
N								L	
O								M	
P								N	
Q								O	
R								P	
S								Q	
T								R	
U								S	
V								T	
W								U	
X								V	
Y								W	
Z								X	

0		1		2		3		4		5		6		7		8		9	
CODE		DESCRIPTION																	
S4		AUXILIARY CONTACT CONTROLLED BY THE SELECTOR. 11-12 CLOSED ONLY WHEN THE SELECTOR IS IN THE LEFT POSITION 13-14 OPENED ONLY WHEN THE SELECTOR IS IN THE LEFT POSITION																	
SA1		SELECTOR SWITCH																	
T1		CURRENT TRANSFORMER																	
T2		CURRENT TRANSFORMER																	
T3		CURRENT TRANSFORMER																	
W1		EARTH CONNECTION																	
X0		TERMINAL STRIP																	
X1		TERMINAL STRIP																	
X2		TERMINAL STRIP																	
X3		TERMINAL STRIP																	
X5		TERMINAL STRIP																	
X6		EARTH STRIP																	
X7		EARTH STRIP																	
X8		TERMINAL STRIP																	
FX1		TERMINAL STRIP																	
Y1		TRIP COIL																	
Y5		LOCKING COIL ON OPERATING SHAFT OF THE CIRCUIT-BREAKER MECHANICAL CLOSING OF THE CIRCUIT-BREAKER IS ONLY POSSIBLE WITH ENERGISED COIL																	
Y6		NO-VOLTAGE RELEASE COIL																	
		</																	

[illegible]

[illegible][illegible]

[illegible][illegible]